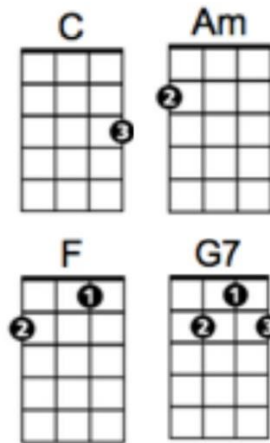


STAND BY ME - Ben E. King

<http://cynthialin.com/ukulele/>

Island Strum (per Cynthia Lin): Down-Down-UP, UP-Down-UP, Down-Down-UP, UP-Down-UP

INTRO : Tom does intro, while everyone strums over first 2 lines; (Bonita has bass lines)

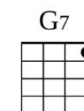
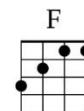
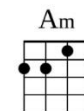
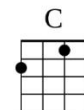


VERSE 1:

C C Am Am
 When the night has come, And the land is dark
 F G7 C C
 And the moon is the only light we'll see

C C Am Am
 No I won't be afraid, no I won't be afraid
 F G7 C C
 Just as long as you stand, stand by me, And darlin', darlin'

BARITONE CHORDS



CHORUS:

C C Am Am
 Stand by me, oh stand by me
 F G7 C C
 oh stand Stand by me, stand by me

VERSE 2:

C C Am Am
 If the sky that we look upon, Should tumble and fall
 F G7 C C
 And the mountains should crumble to the sea

C C Am Am
 I won't cry, I won't cry, no I won't shed a tear
 F G7 C C
 Just as long as you stand, stand by me, And darlin', darlin'

CHORUS:

C C Am Am
 Stand by me, oh stand by me
 F G7 C C
 oh stand Stand by me, stand by me

INSTRUMENTAL - Bob

Repeat VERSE 2

CHORUS - 2 times